



St John's College  
Oxford

# Benefactors

## 2025

Impact of Philanthropy Report and Roll of Benefactors







# Contents

- 3 A Message from the President
- 4 Why Your Support Matters
- 6 How Your Donations Make a Difference
- 8 Student Support
- 12 Graduate Scholarships
- 16 Research and Academia
- 20 Access and Outreach
- 26 College Life
- 32 Join us in Supporting St John's
- 36 Financial Summary Report
- 38 Roll of Benefactors

## Benefactors

Including Summary Financial Report, Sources and Use of Funds for the Year 2023-2024.



All materials within your *Benefactors* pack are FSC® or PEFC certified and 100% recyclable.

Designed and printed by Ciconi Ltd.

Images by John Cairns Photography unless otherwise stated.







# A Message from the President

It is a privilege to extend my deepest gratitude to you, our valued alumni and friends. As will be evident from this latest edition of *Benefactors*, your generosity continues to shape the future of St John's. Your support does not merely enable our ongoing investment in fellowships, buildings, and our innovative access activities; it is also an investment in the bright minds and bold ideas that will create a better future for the world.

Thanks to your generosity, we are equipping the next generation of scholars, fostering ground-breaking research, and ensuring that opportunity remains accessible to all, regardless of background. This year we welcomed our first cohort of Career Development Research Fellows, a new scheme that provides a launchpad for early career researchers at the start of their academic careers, offering them both space for research and the opportunity to develop their teaching experience. We have also been working on a new College strategy and clear themes have emerged, especially the need to help meet the growing demand for postgraduate education through a greater number of scholarships and increased provision of high-quality College accommodation.

This year also brings a change in the leadership of our Development and Alumni Relations team. After seven years in post, Robert Crow has decided to step down and to seek a role that will enable him to spend more time with his young family. I am sure you will join me in thanking him warmly for all he has achieved for the College, and in wishing

“On behalf of the entire College, thank you for your unwavering support.”

him all the best for the future. Kristina McClendon, Deputy Development Director (Philanthropy), will act as Interim Development Director: she looks forward to being in touch with you.

The funds raised this year have already made a tangible impact and, as we look ahead, your commitment will allow us to build upon these successes, strengthening our community and advancing knowledge for the benefit of society. On behalf of the entire College, thank you for your unwavering support. Together, we are securing a future as distinguished as our past.



**Professor Lady Sue Black, Baroness Black of Strome**

LT, DBE, FRS, FRSE, FRAI, FRSB, ChFA

**Left:** The President received an Honorary Degree from the University of the Highlands and Islands, 3 July 2024



# Why Your Support Matters

Philanthropic donations and gifts of time, expertise, and goodwill have a collective and enduring impact on St John's and our broader community. This support, alongside careful management of the College's income and endowment, means that we can continue to be a leading college in Oxford and the wider world.

The College remains committed to pursuing excellence and embracing equality and diversity across disciplines and programmes. As pioneers within the education sector, we are making a real impact within College and beyond in areas including student support, access and outreach, graduate funding, and early career posts. Donations at all levels make this work possible.

## Myth Busting

It is well known that St John's benefits from a significant endowment that has been built over the centuries to support college activities. While this is true in many ways, pervasive perceptions of the College's wealth are not a complete picture.

In the 2023 edition of *Benefactors*, Principal Bursar Zoe Hancock noted, in real and very simple terms, how our sizeable endowment from commercial rent, equity income, and capital gains covers the shortfall of our operational running costs and allows us to make necessary improvements to our historic buildings and the College site.





**“It is only through an increase in philanthropic donations that we can continue to maintain our breadth of support and achieve the College’s ambitious plans for the future.”**

It is only through an increase in philanthropic donations that we can continue to maintain our breadth of support and achieve the College’s ambitious plans for the future. The endowment, as it currently stands, is not able to fund everything the College does, let alone everything we want to do. This is where donations from our alumni and benefactors can make a significant difference.

## **Your Support, Your Impact**

The College prides itself in being an inclusive institution in many ways including:

- being accessible to students regardless of their background or financial circumstances;
- equipping academics of the future through graduate funding and early career posts;
- providing a fulfilling student experience through generous student support and the maintenance of our excellent facilities;
- leading the way in access and outreach programmes, both locally and regionally.

All of this provision has been possible thanks to the philanthropic support from our global alumni community and benefactors as evidenced in the pages that follow.

## **Looking to the Future**

There are a number of areas the College is looking to grow and develop over the coming years as part of the overall strategy and Masterplan, and we hope you will join us in this.

We are continuing to focus heavily on student support and wellbeing, ensuring that our students are cared for, leaving them free to reach their fullest potential.

Our high academic standards and pursuit of excellence across disciplines remains the foundation of our academic strategy. We intend to increase our graduate scholarships and number of early career academic posts as part of our Career Development Research Fellowship (CDRF) programme in order to support the development of the best academics at essential stages of their careers.

In recognition of the University’s goal of achieving net zero carbon and biodiversity net gain by 2035, the College has committed to significantly reducing our carbon emissions. We have formulated a Masterplan to enable this to happen. Improvements to our fabric infrastructure and buildings which are centuries old, as well as a new energy centre, will ensure we reach our sustainability targets. These endeavours provide us with a once-in-a-generation opportunity to reimagine our estate including the refurbishment of the Thomas White (“Tommy White”) Building which will transform the quality of the experience of our students and address their accessibility needs.

## **Your Support is Key**

Your support is critical to enhancing our core activities and realising these ambitious plans. You can be confident in the College’s solid financial foundations and the knowledge that your donations will be used directly to make a positive impact on our community here at St John’s and in the wider world.

Our staff in the Development and Alumni Relations Office would be delighted to speak to you further about the impact of your donations and ways in which you can support us as we prepare the College for the future.



# How Your Donations Make a Difference

## An overview of the 2023–2024 financial year

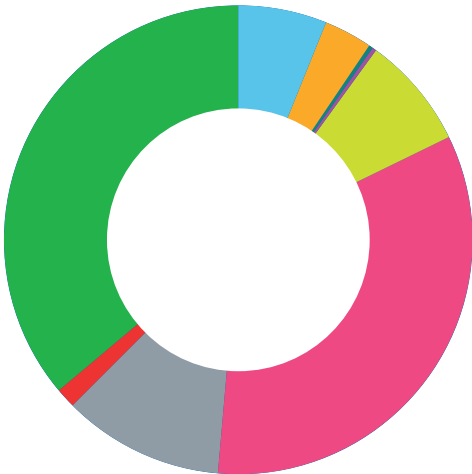
Philanthropic donations from St John’s alumni and friends make a tangible difference to our students, faculty, staff, and partners across our local and regional communities. Thank you for all that you do in offering gifts of time and expertise as well as financial support. You ensure that St John’s can continue to achieve collective impact within College and in the wider community.

Your contributions have supported a wide range of activities this past year, highlighted below and in the pages that follow. These stories celebrate your support, your community, and your impact.

## Your Gifts

Your gifts have a significant impact on every aspect of St John’s life. In the 2023–2024 financial year your gifts were directed to the following areas:

Area of Support	Total	%
Academic Programmes	£162,665	6.3%
Access and Outreach	£86,401	3.4%
Buildings and Facilities	£1,125	0.0%
College life	£11,716	0.5%
Graduate Scholarships	£201,545	7.8%
Research	£862,464	33.5%
Student Support	£286,141	11.1%
Tutorial posts	£34,270	1.3%
Wherever the need is greatest	£925,877	36.0%
Total Raised (New Funds Raised)		£2,572,203.41





**1039**

unique individuals

**29**

individuals gave  
their first gift

**13.6%**

participation (from  
benchmarking)



**884**

donors gave a  
recurring gift

**85%**

of our donors make a  
regular gift

**£34**

average monthly gift



**£652,057**

total legacy income

**131**

members of the  
Rawlinson Society in  
2023–24, consisting  
of those who have  
pledged a gift in their  
Will to the College



**£176,433**

1555 Society income



**24**

events held with over  
**1,500** attendees



Donations  
received from  
**33** different  
countries



# Student Support

**St John's College is committed to creating an inclusive and supportive environment where every student can thrive.**

Thanks to the generosity of our donors, the College can ensure that financial constraints never stand in the way of students with outstanding potential. All students have access to a range of academic and special grants to support their activities – from books and laptops, to travel for academic purposes and conferences to enhance their studies. Incoming UK undergraduate students from the most disadvantaged backgrounds are offered additional resources so they can begin their

course with confidence. The College is committed to attracting the very best students, regardless of their financial circumstances; this support allows our students to focus on their studies and embrace the full St John's experience.

Beyond financial support, St John's places a strong emphasis on health, wellbeing, and welfare. The College offers a range of comprehensive support services and dedicated pastoral care.



## Laurence Cooke

2023, Philosophy and French, JCR President 2025

My time at St John's so far has been nothing short of amazing. As a state comprehensive student from Coventry, I feel especially well-placed to appreciate the College's generosity, kindness, and sense of community. It has been a joy to give back through working at telethons, open days, and serving the student body as JCR President. Not a day goes by where I don't marvel at St John's uniquely well-equipped facilities, the beautiful gardens, and the dedication of academics and other staff. I think it's great that alumni of years past help future applicants share in the magic.

Speaking to alumni is also rewarding as you see the ways life here has and hasn't changed. The increasing diversity of our community these days, facilitated by alumni donations, is always a positive thing to reflect on. Moreover, I have the opportunity to express gratitude for the bursary that helps me study in Oxford free of financial stresses. From new and improved welfare support and sports funding to a packed calendar



of events laid on by the College, there is a real sense that students are valued as individuals, regardless of their background or interests. The tutorial system, of course, only reinforces this, and affords unique possibilities in undergraduate teaching and learning. All these things come together to make the College a truly special place, and a community I will always be a part of.

“The increasing diversity of our community these days, facilitated by alumni donations, is always a positive thing to reflect on.”



Thanks to a generous legacy gift from A & J Reid, the College is able to make awards to final year undergraduates in need of financial assistance to one or more students per year up to a total of £1,000. The first awards have been made and will make a real difference to these students, helping to ease financial pressures during the Vacation before Trinity Term to ensure they can prioritise revision for their finals.



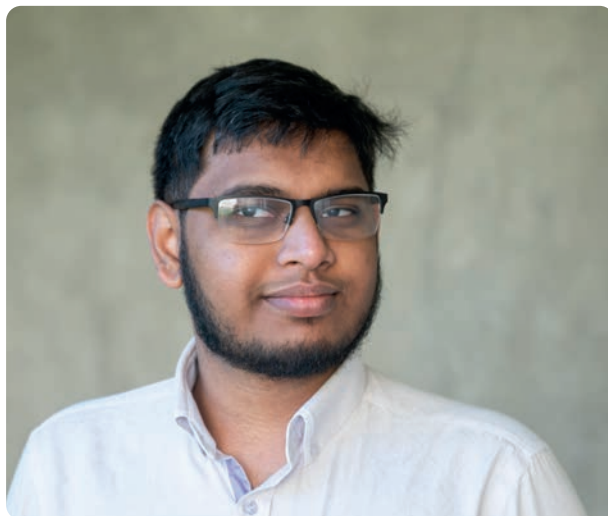


## Zaheen A-Rahman

2023, Engineering

When I first came to St John's as a very introverted fresher from a faraway land, one of the first things I noticed was the sheer size of the College. Over the last two years, I have come to find that not only does St John's have tremendous acreage, but more importantly it has a truly massive heart as well: our awesome alumni, fantastic faculty, stellar staff, and superb students together make up an incredibly supportive, vibrant, and tight-knit community that is second to none in terms of the depth and warmth of feeling between us, and in the scale of its collective achievements. This was particularly apparent when I was raising money for College during two Alumni Telethons, where I had many long and exceptionally enlightening conversations with alumni like yourselves on my degree, future career plans, and involvement in the St John's and wider Oxford community.

Perpetually excited to share my wonderful experience here, I have also had the pleasure and honour of doing many Access and Outreach Q&A sessions for school students visiting St John's, as well as helping with multiple Open Days – quite the transformation from my initially introverted



self! Indeed, this is a great example of what I call the circularity of St John's: the College takes terrific care of its students, at every single stage of their relationship with St John's, leading to the very generous support of alumni like yourselves, which in turn enables the College to sustain its world-class environment and education. This cycle is tremendously impactful globally too, due to the many fantastic accomplishments of our amazing alumni over the years. Long may this unbridled success continue!

Ginny McCloy



## Ginny McCloy (née Lloyd)

1987, Chemistry

I arrived at St John's in October 1987 to read Chemistry. I grew up in Darlington, attending the local comprehensive school and Queen Elizabeth Sixth Form College, being the only student from my year to achieve an Oxford place. I had great support from my parents and A Level Chemistry teacher who, by happy coincidence, was at St John's himself in the 1940s, back when there were coal fires in all the student rooms!

Despite the somewhat dubious honour of being dubbed a 'Northern Chemist' I found the atmosphere at St John's very welcoming. I made (lifelong) friends – it was such an eye-opener (if a bit daunting at times) to meet new people who knew so much about everything! My tutors were great characters, and there was potential to join so many clubs and societies. Any regrets about my time at Oxford? Just that there wasn't enough time to enjoy the beautiful St John's gardens, explore all the other colleges – and why didn't I find time to sneak into some lectures on other subjects?!

Above all, my time at St John's gave me confidence in my own abilities and prepared me to step out of my comfort zone whether intellectually or socially. I went on to have a 30-year international career with Shell, including 10 years in Asia, (alas with my Chemistry degree knowledge only used occasionally). In recent times St John's has made a fantastic effort to reach out to alumni. I thoroughly enjoy coming back to College and it always reminds me what a special time of my life it was. I received so much benefit from my time at St John's and for that reason I have chosen to make a regular annual donation to the College for the current student population. I hope that this, in some small way, supports them to have the same amazing opportunities I have had.

“Above all, my time at St John's gave me confidence in my own abilities and prepared me to step out of my comfort zone whether intellectually or socially.”





# Graduate Scholarships

**At St John's, graduate students enjoy being part of a thriving international intellectual community, as well as having excellent recreational facilities and extensive support.**

Graduate scholarships are essential for removing financial barriers to further academic study and attracting top talent from around the world. These are amongst our highest priorities at St John's and across the collegiate University. With your help, the College is able to offer generous financial support through a range of scholarships, grants and bursaries.

Financial support provides students with access to world-class resources and support, enabling them to engage fully in their studies and make significant contributions in their fields. The generosity of donors is crucial in making this possible, allowing the College to maintain its legacy of academic excellence and inclusivity.



Hannah Dobbs



“The St John’s scholarship has been fundamental in allowing me to undertake this research within the Nuffield Department of Medicine.”

## Hannah Dobbs

2023, DPhil Clinical Medicine

I am completing the first year of my DPhil in Clinical Medicine which is a four-year funded programme to research Alzheimer’s disease, kindly supported by a St John’s scholarship.

My DPhil project is centred around lipid metabolism as an important mechanism in Alzheimer’s disease progression. A greater understanding of lipid regulation and neuroinflammation would be fundamental to understanding the pathophysiology of Alzheimer’s disease.

In technical terms, my DPhil project aims to address whether altering microglia lipid accumulation can improve microglial functions in human cell models. I am doing this by modelling the disease using human stem cells differentiated into microglia. This year, I have been identifying the best way to stain the lipid accumulation within the cells, and am planning to perform a large genetic screen using the gene-editing technology CRISPR/Cas9. This involves several hundred genes being effectively turned off one-by-one to see whether their absence will impact lipid droplets in microglia to give us insights into whether they play an endogenous role in lipid accumulation. Future work will then focus on translating any new genes identified from screen into potential therapeutic targets.

I believe this work is incredibly important to undertake to further our knowledge on how Alzheimer’s disease progresses, which will allow

us to identify new and more effective therapeutic strategies that can help us stop the disease progressing in patients. The St John’s scholarship has been fundamental in allowing me to undertake this research within the Nuffield Department of Medicine, paying for my courses fees which has enabled me to study my DPhil on a full-time basis.

I am particularly grateful to receive this funding from St John’s as well as additional support from an academic grant that has enabled me to purchase a laptop to process my research data. I have also benefitted from the MCR Women’s Leadership Programme. In my case, this programme has provided talks on STEM career progression and transitioning into industry – topics and sessions that are helping me consider my next steps after completing my degree.

I have presented my initial work at the Oxford-MRC DTP symposium this year; it was a great opportunity to discuss my work with the academic community and generate ideas for my future research. I hope to attend more conferences and meetings next year, especially after I have my screen results.

Next year, I aim to have completed my screen and will be following on the targets and their impacts on Alzheimer’s disease progression. I am particularly looking forward to learning bioinformatics skills, which are very desirable in the field and will be of great benefit in the near future.



## Ahmet Furkan Inan

2023, DPhil in Fine Art (Contemporary Art History and Theory)

I am deeply honoured to have received a scholarship from St John's to support my DPhil research in Contemporary Art History and Theory at Oxford's Ruskin School of Art. Receiving this scholarship funding has been crucial in enabling me to fully commit to my DPhil research throughout the duration of my studies. It has alleviated financial pressures, allowing me to focus wholeheartedly on my academic pursuits and artistic endeavours. It has not only relieved stress but has also affirmed the value and potential impact of my research.

Studying at St John's College has been transformative for my career aspirations. The academic environment fosters deep intellectual engagement and interdisciplinary collaboration, which are invaluable for my research in Contemporary Art History. I have found the best possible intellectual home in the SJC community and its MCR. Moreover, with its extensive welfare provisions and commitment to providing affordable accommodation and food, the College has made it much easier for an overseas student from a lower middle-class family like me to adapt to life in Oxford and the UK in general. Additionally, the support provided by the College in the form of research grants has allowed me to conduct better research, and provided access to materials that would have otherwise been impossible to access.

My research aims to contribute new perspectives to the field of contemporary art history by critically examining contemporary art practices that emerged in Istanbul during the 1990s and 2000s in relation to their social, cultural, and political contexts. Specifically, I intend to provide an analysis of the 'Istanbul Miracle' that emerged during the early years of the noughties. My research will answer how and why this so-called 'miracle' happened, why it has failed to deliver on the cultural revolution that its earlier proponents were arguing for, and how this whole story connects with and echoes developments in other places across the world. I believe it will provide invaluable insights for the central contradictions of contemporary art globally, which would have otherwise remained unseen.



Ahmet Furkan Inan

“Studying at St John's College has been transformative for my career aspirations.”

Scholarship funding from St John's has enabled me to focus on my research, facilitated access to specialised resources and archives critical to my studies, provided opportunities for presenting research findings at international conferences and strengthened collaborations with scholars and artists, thereby enriching the scope and depth of my research. This scholarship has been pivotal in empowering my academic pursuits and preparing me for a fulfilling career in the academic field of art history. I am immensely grateful for the support of St John's College and look forward to continuing to make meaningful contributions to the College community, the wider research community at Oxford and my field of study.





# Research and Academia

**St John's is renowned for its academic and research excellence.**

The generosity of donors enables cutting-edge research, supports world-leading academics, and secures essential academic posts from early career to tutorial fellowships. These contributions directly impact the academic community, fostering interdisciplinary collaboration, and nurturing future scholars. By investing in research and academia we can ensure that St John's remains a beacon

of excellence. Your support fuels innovation, sustains academic excellence, and leaves a lasting legacy for generations to come, allowing the College to continue its ground-breaking research and solve real-world problems.





The 2024 cohort of CDRFs (left to right: Dr Alina Utrata, Dr Alice Millington, Dr Shurui Miao, Dr Carolyn T. La Rocco, Dr Anna Dewar, Dr Samuel Boateng, Dr Muting Hao).

## Career Development Research Fellowships

In 2024, St John's established a Career Development Research Fellowship (CDRF) programme, offering early career academics an outstanding opportunity to build a research profile within a collegiate community. These fixed-term postdoctoral fellowships, tenable for four years, allow the postholder to focus on a programme of original research with opportunities to develop their career through teaching and other academic activities. Over time, the College aims to elect at least one CDRF in each subject taught at St John's, enriching its research and teaching community across a range of disciplines.

This programme is pioneering across Oxbridge colleges in terms of its scale and range. The goal is to have around 28 CDRFs and to build subject community in all areas.

The inaugural round of elections in 2024 saw the appointment of seven CDRFs in Anthropology, Biology, Chemistry, Classical Archaeology and Ancient History, Engineering, Music, and Politics.

In 2025 the College will welcome new CDRFs in Computer Science, Fine Art, History of Art, Law, Mathematics, Modern Languages, and Psychology.

"I am delighted to see the next round of appointments to our ambitious CDRF scheme. We have found some outstanding early career researchers from a very competitive field, and look forward to the contribution they will make to our research and subject communities at the College."

**Dr Matthew Nicholls (Senior Tutor)**



“CDRFs are a fabulous way for researchers to become fully integrated in all aspects of St John’s College. These prestigious Fellowships recognise research excellence and provide protected time and a fabulous opportunity to enable Fellows to address ambitious research questions. It is exciting to see the vibrant and growing community of CDRFs in College.”

**Professor Rebecca Slater (Fellow for Early Career Researchers & Lecturers)**

## Dr Alice Millington

**CDRF 2024, Archaeology and Anthropology**

I joined St John’s on the new Career Development Research Fellowship scheme in October 2024. I had just completed my PhD at the University of Cambridge, which involved spending six months living with yak herders in the high reaches of the Himalayas in Eastern Nepal. My research was originally about climate change, but because I travelled there in late 2021 – during the height of the COVID pandemic – my fieldwork also provided a rare opportunity to document an unprecedented period of closure at the Sino–Nepal border. My research therefore paints a complex picture of the environmental and socio–political challenges affecting a remote pastoral community.

This kind of fieldwork was inevitably difficult. Living in an uninsulated wooden house in temperatures that dropped to  $-30^{\circ}\text{C}$  was challenging, but somehow, I had caught the bug for it. Now, two terms into my CDRF, I have just returned to Nepal, funded by one of St John’s Small Research Grants, and am in the process of organising the logistics to return to the village that I did my doctoral fieldwork in. I am so excited to revisit the families that hosted me for all those months, and to follow up with some crucial unanswered questions. I also can’t wait to see the yaks again!

Doing my CDRF at St John’s has been incredible so far. The Senior Common Room has been a really welcoming environment, and it is particularly nice to be surrounded by so many other early career scholars – reflective of St John’s commitment to giving so many junior academics a platform to develop their career during the often precarious postdoctoral years.



St John’s College

“I am so excited to have the chance to develop a career that, ten years ago, I couldn’t have dreamed about, and it is the generosity and support of St John’s that has made this possible.”

All images Alice Millington



Coming to Oxford as a postdoc has also given me the chance to audit the Colloquial Tibetan language course run by the Asian and Middle Eastern Studies department – benefitting from up to five hours per week of Tibetan language training alongside my research. Since I previously conducted my fieldwork in the Nepali language, I know that having additional knowledge of Tibetan – which the local dialect of the village is derived from – will be invaluable for strengthening my relationships in the field, particularly with yak herders. Oxford is now the only university in the UK which teaches Tibetan language, so I feel incredibly lucky to have received a Fellowship here.

After this trip, I hope to keep my boots on the ground in the UK for a little while, working on publishing a monograph adapted from my thesis and this upcoming field trip. I also plan to begin a new project on the Tibetan almanac and its relationship to weather forecasting, something that bridges my background in the physical sciences in Geography and the anthropological experience I've gained in the field. I am so excited to have the chance to develop a career that, ten years ago, I couldn't have dreamed about, and it is the generosity and support of St John's that has made this possible.



“Doing my CDRF at St John's has been incredible so far. The Senior Common Room has been a really welcoming environment, and it is particularly nice to be surrounded by so many other early career scholars – reflective of St John's commitment to giving so many junior academics a platform to develop their career during the often precarious postdoctoral years.”

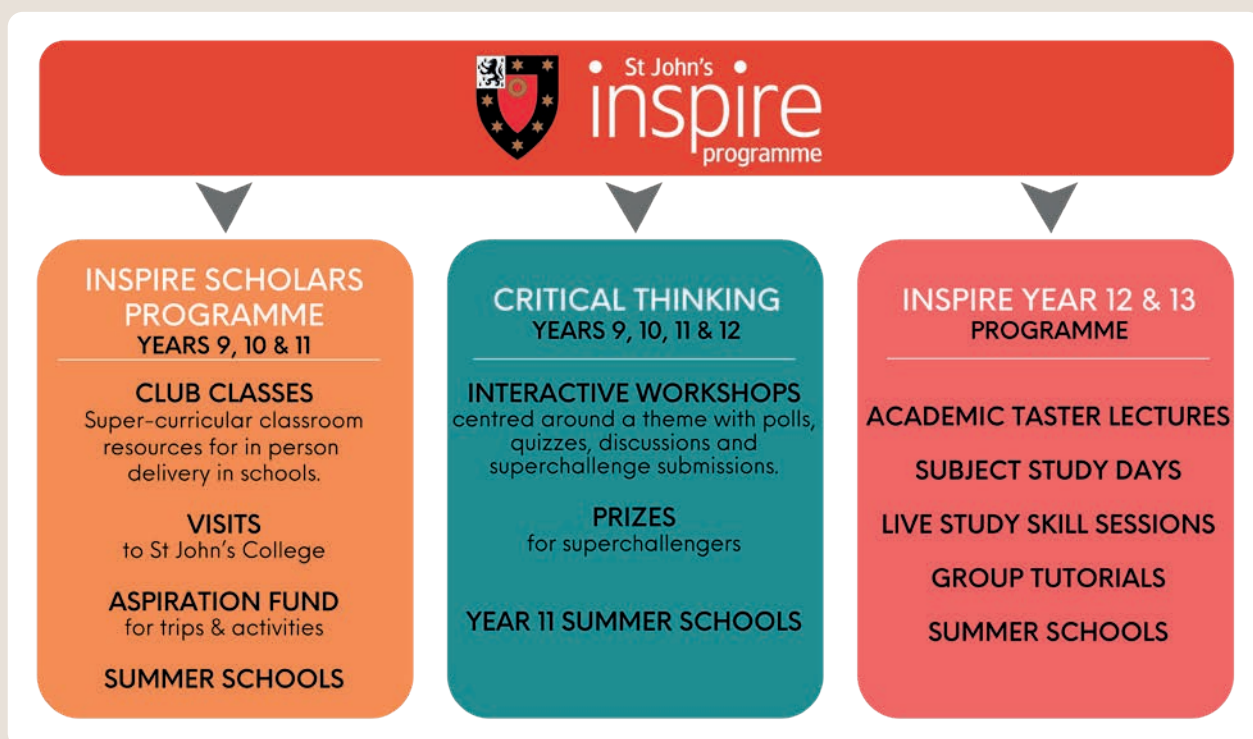


# Access and Outreach

Your support of the College's access and outreach initiatives enables St John's to continue to open up more opportunities, raise aspirations, and further engage with young people from primary school to age 18.

“The Access and Outreach programmes at St John's have something to offer to state-school pupils of all ages and abilities, across our link regions and the whole of the UK.”

In the following pages, we hear from a student who participated in our flagship Inspire Programme and is now in their first year of undergraduate studies at Oxford, demonstrating the ways in which this programme has a tangible and significant impact on young people's lives. Also outlined is the Access Team's exciting new project: developing a pioneering digital platform which will make the programmes even more accessible and engaging for pupils.





## Jenna Ilett

Digital Platform Development Manager

The Access and Outreach programmes at St John's have something to offer to state-school pupils of all ages and abilities, across our link regions and the whole of the UK. As well as providing even more exciting in-person activities like our primary school literacy and science days, secondary school visits and summer schools, and subject-specific study days for those considering higher education, our long-term, sustained access programmes are also expanding.

In the 2023/24 academic year, 15 more schools in our link regions joined the Year 9, 10 & 11 Inspire Scholars Programme, bringing the total number of schools to 42, and the number of scholars to 1,341. The Year 12 and 13 Programmes have also seen an increase in numbers, with over 1000 actively enrolled across the South East. The current Critical Thinking Programme, centred around the power of language, received the highest number of applications so far, with over 2000 pupils participating across the UK. We are starting to see the impact of our programmes as enrolled pupils progress into Higher Education.

**“We are starting to see the impact of our programmes as enrolled pupils progress into Higher Education.”**

## ACCESS AND OUTREACH

## 2023-2024 Access & Outreach in Numbers

### 321

summer school attendees

### 1,000

pupils visiting St John's on Access visits and Primary visits

### 663

study day attendees

### 1,032

pupils enrolled in Inspire Y12 and Y13

### 1,341

pupils enrolled in Inspire Scholars Y9, 10 and 11

### 1,623

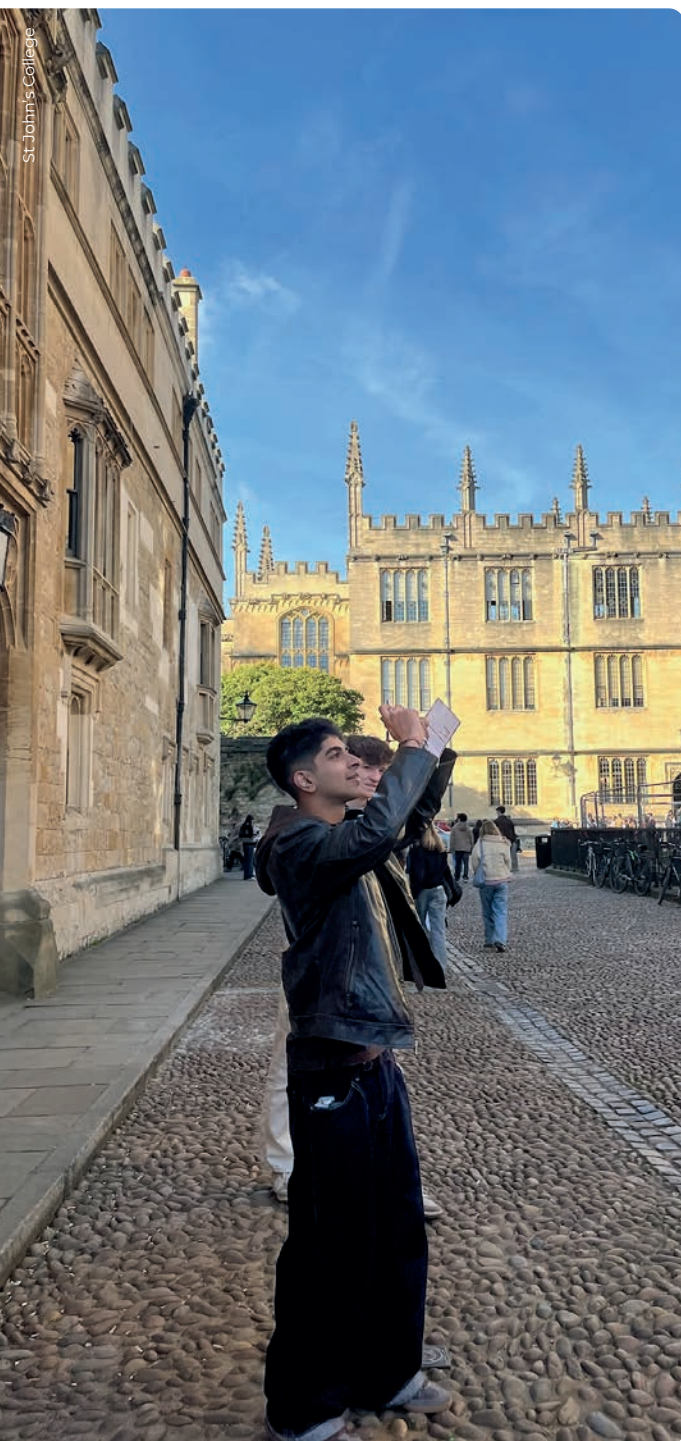
pupils enrolled in Inspire Critical Thinking

### 98

Offer Holder Day Attendees



Ishen attended Nower Hill High School, Harrow, and enrolled on the Inspire Year 12 Programme upon entering the Sixth Form in 2022. He is now in his first year of university, reading Biology at St John's College, Oxford. He reflects on his experience of the Inspire Programme:



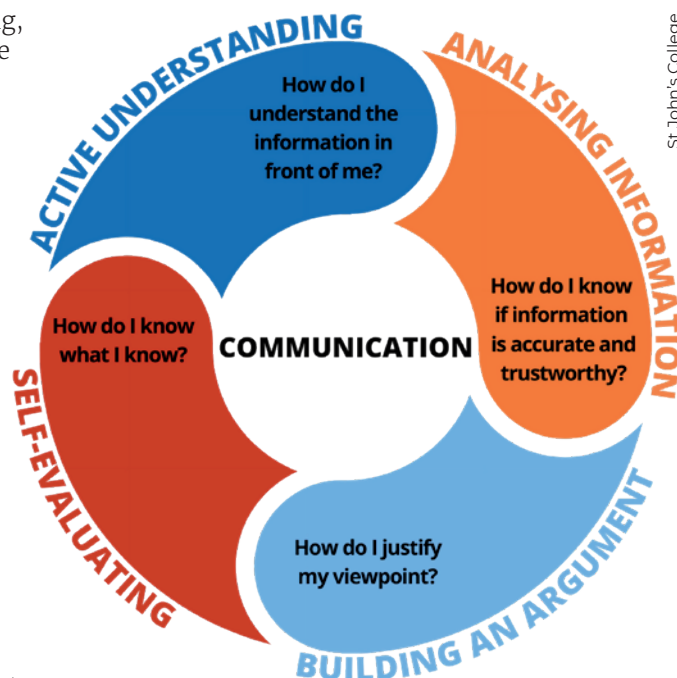
"I enrolled onto the Inspire Programme at the beginning of Year 12, simply hoping to gain more insight into what university is about. At this point, Oxford felt like it was definitely out of my reach. As a student at a non-selective state school, Oxford sounded like a different world, where socially I would feel alienated, and academically I would crumble. Throughout Year 12, I attended online workshops organised by the Inspire Programme, allowing me to further understand how applying to Oxford worked, how the collegiate system functioned, and other important aspects of university life such as work-life balance and financing. The part of the programme which really changed things for me was the opportunity to attend a free three-night summer school at St John's. I remember applying thinking that it would be too oversubscribed and I probably wouldn't get a place. Thankfully, however, I was wrong. By the end of Year 12 I had no clue what I wanted to study at university, or even if I really wanted to go to university, but I was still excited to go on this summer school at the end of July. It was one of the best experiences I ever signed up for, and I'm being honest when I say that I'm not sure I still would've applied for Oxford if it weren't for that opportunity. Living in an Oxford college, seeing its hall, library and gardens, walking around the city with friends – all of it made me realise that this fantasy could actually be my life for a few years. Talking to students reading so many different courses, and hearing about what was available to them, really motivated me to figure out what I wanted to study. The Inspire Programme genuinely gave me the drive and confidence to succeed in my Oxford application, and I am so grateful for the support I was given. The programme helped me realise that I am just as capable of studying at Oxford as anyone else."

**Ishen Dodhia, first year Biology student at St John's College**

Not only are the number of pupils increasing, but also the variety of resources, with new super-curricular class resources for Inspire Scholars, additional academic taster videos for Year 12 and 13 pupils, and annual refreshes of our Virtual Summer School. We are also introducing new interactive elements such as live tutorials led by current St John's postgraduate students, to keep our programmes relevant and exciting for pupils. To ensure our programmes can continue to

develop while remaining accessible and engaging, and to streamline administration procedures, we need to move from our current Inspire Digital website to a platform with greater flexibility. As Digital Platform Development Manager, my role for the past few months has been researching, trialling and testing various Virtual Learning Environments (VLEs) that could support the differing needs of our programmes going forwards and allow us to provide even better user experiences for students.

In order to meet our overarching aim of raising academic aspirations, we have developed a framework of 5 *Inspire Learning Skills*. While these skills have already been integrated into all our existing programme materials, a VLE would allow us to gamify our content via 'skill tagging'. This would allow pupils to see an overview of the skills they have had the opportunity to develop and provide incentive to interact with a wide range of content, boosting engagement with programme materials.



Inspire Learning Skills

**ACTIVE UNDERSTANDING**

## How is technology changing our language?

Author: Maren Fichter, MPhil in Linguistics from the Faculty of Linguistics, Philology and Phonetics, Oxford

If you have read Caroline Larrington's article 'How has the English language evolved?', you will already know a lot about how language evolves, and in particular about how English has evolved over the last several centuries. But these days, language is changing faster than ever before—how many times have your parents (or even an older sibling) told you that they have no idea what you're saying?

**New modes of communication**  
Since computers started appearing in homes in the 1980s, we have learned to communicate with each other in entirely new ways. The most direct effect of this on language is the creation of new words to describe our new modes of communication. A great example of this is the shortening of the original electronic mail to *e-mail*, which has since contracted entirely to *email*. Much of the language around new technology uses metaphors like this, which express new concepts in terms of familiar ones. Some other examples are *desktop*, *folders* and *cloud*. The meaning of words like these has shifted drastically in the past few decades, and this is still happening; we are constantly developing new terms to describe new technologies and innovations. If you ask your grandparents what a story is, they are more likely to define this word as a narrative or anecdote rather than a short video you watch on Instagram or Snapchat—this is an indication of change in progress.

**English as a global lingua franca**  
Because so many computing advances and social media networks have been made in English, the words we use to talk about our digital world also tend to be in English. This has accelerated the development of English as a global *lingua franca*, or a shared language used to facilitate communication between speakers of different languages. Other languages have borrowed a number of words from English to describe the digital world: an Instagram story is likely to be a story no matter where you are in the world. Throughout most of human history, the people you encountered and the community you were part of were determined by where you lived, the language spoken there, and your age, gender, class and other such characteristics. But with the increased mobility of the modern world, and with the advent of computers and the internet, people have been able to connect across greater distances in increasingly convenient ways. Given this increased level of connectivity, people can now encounter speakers of other languages more easily than ever before. This digital mobility has also contributed to

**COMMUNICATION**

## The Linguistic Turn; the death of history?

Author: Harry Stewart Dilley, History student at Somerville College, Oxford

This essay considers the implications of some theoretical evolutions in history since the 1960s and how the discipline has changed. In the English language, 'history' is a word deceptive in its simplicity. On the one hand, it serves to describe events in the past; at school, you might learn the 'history' of the Norman Conquest, that is, the events associated with 1066. On the other hand, 'history' also refers to the study of those same past events: you do or practice history. Other languages seek to help us understand this duality—Germans might refer separately to *Geschichte* and *Vorgangenes*—but in English it is not so self-evident. In the academic study of history, this has become a topic of great significance and debate. Indeed, since the 1960s, a debate has proceeded on the distinction between the two terms and, in fact, on whether we can separate 'the past' as an objective entity from its study at all. The origins of this debate were congruent with a wider postmodernist movement in the social sciences and have since been labelled the 'Linguistic Turn'. The basic principle of the postmodern theory of historiography is to reject the notion that historical writing refers to an 'actual historical past', independent of our

Indeed, since the 1960s, a debate has proceeded on the distinction between the two terms and, in fact, on whether we can separate 'the past' as an objective entity from its study at all.

representation of it. To be sure, through the study of sources we can still discover facts—the Battle of Hastings happened in 1066; William the Conqueror travelled to London—however, postmodernists argue that any further step towards the construction of a historical account is a literary rather than scientific exercise: it constitutes the interpretation and reproduction of written sources by historians. Social scientists like Michel Foucault and Jacques Derrida abandoned the premise that history was the analysis of real people having real thoughts and feelings. They conceived of society, not as anything unified or concrete, but as an infinity of symbols without clear meanings. These symbols had to be 'read' by the historian or the social scientist: language was not only a part of society, it constituted society. Naturally, this had severe implications for history as it was known, which Georg Iggers explored in a chapter on the 'Linguistic Turn': 'The end of History as a Scholarly Discipline'. Importantly, however, though 'Scholarly' history has incorporated many of the ideas of the Linguistic Turn, it has not ended. In the main, this is because mainstream historians have resisted its most radical

Sample pages from a Critical Thinking workshop



Additionally, moving to a VLE would allow all pupils to have an individual account, enabling them to see a more personalised pathway specific to the programme they are enrolled on. This will allow pupils to see the full range of content that will be offered, while maintaining the opt-in nature of our programmes. We will also be able to target pupils with relevant notifications about upcoming events such as summer schools and study days, as well as create dedicated hubs for specific groups, such as our Inspire Teacher Leads. Individual logins will also help the Access Team evaluate the programmes on a granular level, identify patterns of engagement across different groups, and help us make data-driven decisions to ensure our programmes remain relevant and interesting for those enrolled.

Maxim was enrolled on the Year 12 and 13 Programme and is now in the first year of his undergraduate degree at St John's. Maxim has maintained connections with the Access Team and is currently working as an Academic Intern.

"It has been exciting to see how the programmes and their content will develop with a new VLE. The accessibility of a VLE and new interactive options, notifications and metrics on student engagement will further ensure that the Inspire Programme can deliver sustained and targeted support. Students who struggle with organisation, attention or engagement will still be able to receive the benefits of the programmes, without feeling an obligation to engage with all content. During my time on the programme, it was sometimes difficult to balance work and super-curricular activities, but a new integrated platform presents a more streamlined, personalised experience, allowing students to shape the programmes around their interests."

**Maxim Vorobev, first year History student at St John's College**

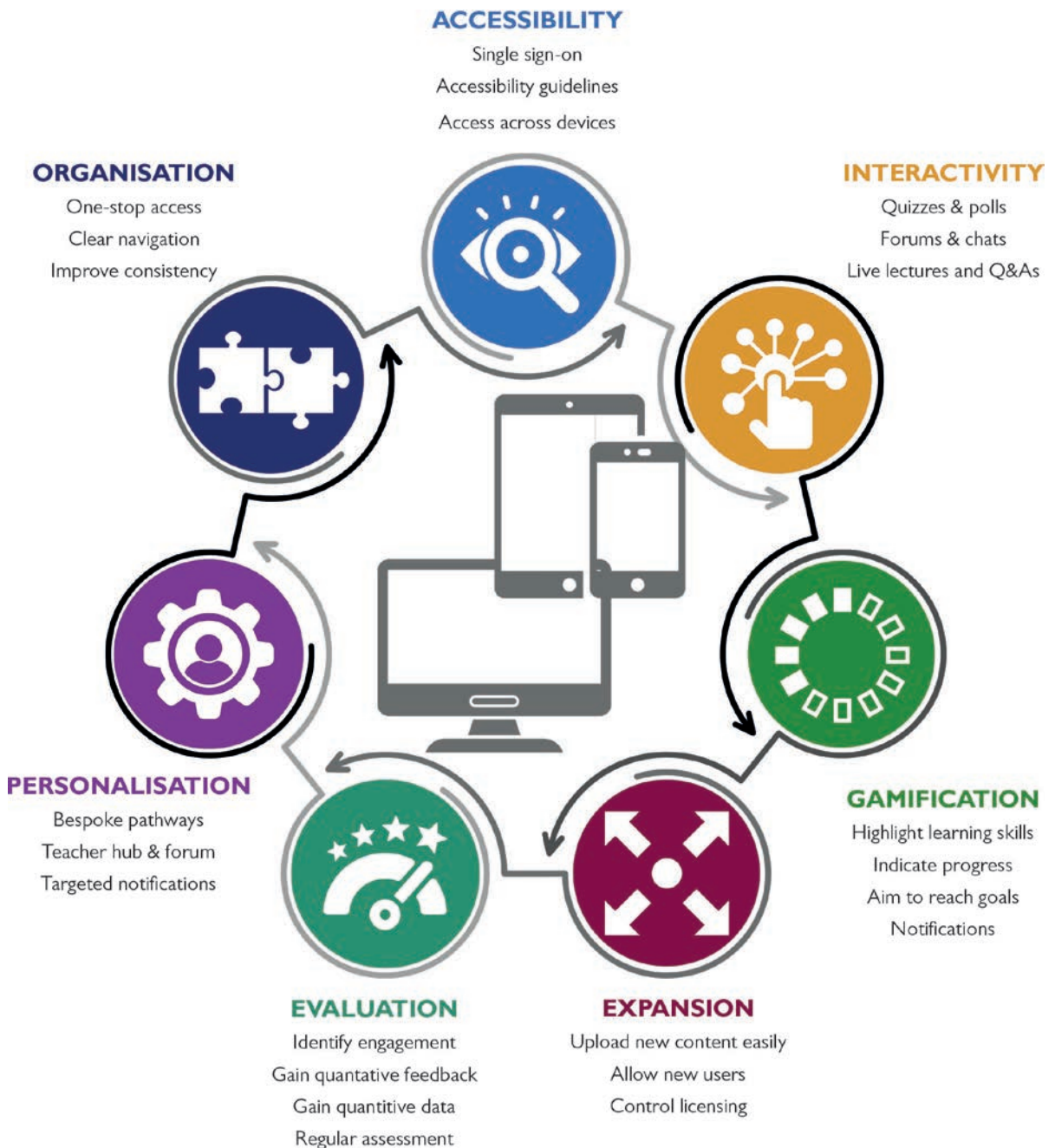


St John's College

This is an exciting time for the St John's Access Team, as we take the next steps to ensure our programmes will maintain their impact long into the future. The new VLE will improve experiences for all our users, with more interactive and engaging content for pupils, a collaborative space and repository of resources for teachers, and reduced administrative duties for the Access Team, with easier enrolment of students and a holistic approach to all programme requirements. A new VLE will allow the flexibility our programmes need to continue to grow and develop, with scope for both expansion of programme materials and student enrolment, and the additional possibility of licensing out our programmes to other colleges, so that even more pupils can benefit from our programmes.

"This is an exciting time for the St John's Access Team, as we take the next steps to ensure our programmes will maintain their impact long into the future."

# Inspire VLE Development





# College Life

**It is vital to ensure students have a full and well-rounded experience that enhances their day-to-day life, which in turn supports their studies, transforms lives and has an impact on society around the world. The interplay between studying and the wider student experience is supported across College.**

St John's is renowned for its strong community spirit and seeks to provide opportunities for all students to engage in college life. Providing opportunities and spaces for the College community to come together has been possible through the support of our alumni.



## Providing Welfare and Wellbeing

St John's is committed to being an open and inclusive community where everyone has access to the support they need to succeed. Through "donations to the greatest need" the College has ensured the provision of a welfare team for students.

"College welfare provides a brilliant support system for students. Personally, it has made the difference between needing time out from university and managing to continue my studies. Hanne is a lovely, understanding and constructive listener who provides a measured view to issues. Having the ability to book time to chat problems through is a unique and very lucky resource to have as a student, for which I am very grateful. It is reassuring to know that there is someone willing to listen and a very easily accessible support network if things aren't going well."

**A current St John's student**



St John's College

"Welfare and wellbeing are very different. Students taking care of their wellbeing can be likened to being their own best friend and ensuring they balance their studies with making time for all the things they love doing and benefit from, both mentally and physically. Welfare support is there for when life throws them a curve ball and they need some specific support from a professional student support team. The College Welfare and Wellbeing team work to try and make sure they have plenty of opportunity to engage with Mind's Five Ways to Wellbeing and have clear access to welfare support when they need it."

**Hanne Clark, Head of Student Wellbeing**







St John's College

## A Space for Sport

St John's College



“Sport and exercise are vital to student wellbeing, and the College provides financial support to a broad range of student-led clubs, from well-established sports such as rowing, football, rugby and cricket to newer additions such as yoga, padel, dancesport and ice hockey. The Running Club, for example, was set up in 2023 and its members, drawn from students, staff and fellows, formed the backbone of the College’s entry to the Town and Gown 10K race in May 2024. The bonds formed through shared sporting activities are long-lasting and sport often provides students with some of their most-valued memories of college life, whilst also helping to prepare them for life after college.”

**Professor Ben McFarlane, Fellow for Sport**

“As a student involved in college sport here at St John’s, the support we receive is evident and continues to enable fellow students to participate in a range of sports. The support enables teams to provide quality equipment and coaching to members, which in turn supports growth of the teams as well as individual participation and progression in sport. The support we are fortunate to receive promotes student engagement with sport which has a positive impact on both physical and social wellbeing. Furthermore, the support we receive enables St John’s teams to remain competitive when facing other college teams, with teams regularly progressing to final stages of Cuppers tournaments. As a recipient of the sporting Blues Grant, I can say that this support aided me to progress in University level sport and represent the University in the Varsity Ski Races this year. The support we receive remains apparent and I am sure I can say on behalf of all students here that we are extremely grateful for this continued support.”

**Rory Bristoll, current JCR Sports Officer**



Rory Bristoll



## A Voice for the Chapel and Choir

The Chapel exists to promote thoughtful responses to faith and has always had a strong musical tradition, with a wide repertoire and offering time for reflection. The Choir is very much at the heart of the chapel community, consisting of women and men, undergraduates and graduates, both from St John's and from elsewhere in the University. St John's is very proud of the Choir's work, and we seek to shape a new generation of St John's voices. At the end of last year, the choir, directed by David Bannister, recorded a Christmas album, 'News of Great Joy'.

"It is a privilege to work with the choir, and to hear their development as individual singers and as a group. The support and encouragement we receive underpins everything we do, and connects our work back through a network of music making and generosity to the foundation of the College, and to our great anthem 'This is the record of John' by Orlando Gibbons, whose 400th anniversary we're celebrating this year."

**The Revd. Dr Elizabeth Macfarlane, Chaplain**



St John's College / Resonus Records

"Singing in the St John's Chapel Choir is more than the musical punctuation to my week – it is the activity to which I look forward most. I am truly so happy to be a part of this tight-knit singing society."

**A graduate choir member**



St John's College



## Tranquility in the Gardens

Since the 16th century the College's extensive gardens and groves have provided a tranquil setting within St John's. The space provides a peaceful haven, enabling students to connect with the natural world through their senses, to relax, walk, listen, and engage with the details of their surroundings.

The completed restoration of the 'Theatrical Shrubbery Border' last year was inspired by the 1783 engraving by Michael Angelo Rooker depicting a view of St John's College from the garden. In line with the original engraving and with conservation work in a Grade-I listed garden, the historic rise in the bed was carefully conserved as was the planned 'informality' of the original border.

The new 'Scottish Border' was also inaugurated at the front of the convex wall (built along with the Study Centre), which links up to the right side of the East Front of Canterbury. It has been given by the College in commemoration of Professor Lady Sue Black's installation to the Order of the Thistle by His Majesty, King Charles III.

From Michaelmas Term 2024 the gardening team has been undertaking the first wholesale restoration of the East Front ('Canterbury Border'). Phase 1 focused on the right side of the bed which has been cleared of major shrubs and rewiring has taken place on the edifice of Canterbury to provide better support for future climbers, including the much beloved wisteria. Renewed attention is also being lavished on the College's groves that are unique to the gardens.

*"Your support provides invaluable assistance to conserve, maintain, and protect the arboricultural heritage of the College's Groves while simultaneously seeking to find better ways to preserve the garden's history as well as its future through thoughtful horticultural initiatives aimed at increasing biodiversity and promoting ecological sustainability."*

**Professor Noël K. Sugimura, Keeper of the Groves**







## Custodians of the Historic Library

Buildings and their surroundings support students to focus on their reading and studying for their courses. The library continues to be the main focus for this in College and it is one of largest and most modern college libraries in Oxford (opened in 2019). Your support has enabled the Historic Libraries and Canterbury Quad to undergo a lengthy project of essential restoration and environmental upgrades.

The opening of the new Library and Study Centre, the Paddy Room (as the converted rooms were known) enabled five rooms to be reinstated as teaching rooms for fellows. With the generous support of the alumni community, each of the five refurbished rooms is named after a distinguished College tutor who made a significant impact in their fields and on their students: Professor Elizabeth Fallaize (Modern Languages – French), Professor George Fleet (Organic Chemistry), Professor Mark Freedland KC FBA (Jurisprudence), Professor Sir John Kay FRSE FBA (Economics), and Professor Donald Russell FBA (Classics).



"The Old and Laudian libraries were both built and equipped through benefactions. There is a wonderful sense of circularity that generous people have enabled them to be restored. As a result, a precious architectural inheritance has been renewed and the heart of the College's intellectual life sustained for future generations."

**Reverend Professor William Whyte FRHistS, FSA, Tutorial Fellow in History**



# Join us in Supporting St John's

**Contributions from alumni, friends, and benefactors enable us to make a real and tangible difference to the College community and wider world.**

The contents of this publication have only been possible because of the investment in our students, staff, fellows, and local and regional partnerships. The real strength of our fundraising mission is that so many people choose to be part of it. As the College looks to the future, we can only do more with your help.



# Leave Your Legacy

## The Rawlinson Society

St John's recognises the generosity of all those who have kindly remembered the College in their Will through the Rawlinson Society. We are delighted to have over 130 members of the Society and look forward to welcoming them back to College every year as a thank you for supporting St John's in this way. We strongly encourage you to let the College know if you have included a provision for the College in your Will so that we can thank you appropriately.

Making a Will is a very personal matter and your plans will be held in the strictest confidence. Including a legacy in your Will or adding a Codicil is usually quite simple, although we strongly advise that you take professional legal advice.

More information can be found on our website at [sjc.ox.ac.uk/alumni/contribute/how-give/](http://sjc.ox.ac.uk/alumni/contribute/how-give/) or contact Kristina McClendon ([kristina.mcclendon@sjc.ox.ac.uk](mailto:kristina.mcclendon@sjc.ox.ac.uk)) and Sophie Parkinson ([sophie.parkinson@sjc.ox.ac.uk](mailto:sophie.parkinson@sjc.ox.ac.uk)) in the Development and Alumni Relations Office.

## Making a gift in your Will

Leaving a gift to St John's in your Will may be more feasible than making a current gift, and can have tax advantages. Once you have made provision for your family, we would be delighted if you would consider supporting the College. There are a number of ways in which you can recognise St John's in your Will, and the method you choose will depend on your circumstances. The most common form of legacy is a specified sum of money, but it is also possible to donate a specific asset, a percentage of your estate, or its residuary after gifts to other people or charities.

We understand that circumstances change. You do not need to let us know the value of your planned gift and it will not represent a binding commitment. When pledging a legacy, you can decide where you want your support to go.

## Reducing your Inheritance Tax Bill

Gifts to St John's College are exempt from Inheritance Tax (IHT) in the UK.

Furthermore, if you leave charitable gifts in your Will that amount to 10% or more of your chargeable net estate, the IHT rate on the whole of your estate will be reduced from 40% to 36%.

If you inherit through a Will, you can use a Deed of Variation to give the inheritance directly to charities, which is tax efficient and reduces IHT too, providing it is done within two years.



## 1555 Society

The 1555 Society was established to recognise and thank the College's most generous regular donors who give £1,555 (US \$2,000) or more per year. The College holds events to thank these regular donors for their support and they are recognised in our donor publications.

To learn more about joining the 1555 Society please visit our website at [sjc.ox.ac.uk/alumni/contribute/how-we-recognise-your-support/](http://sjc.ox.ac.uk/alumni/contribute/how-we-recognise-your-support/) or contact Sophie Parkinson at [sophie.parkinson@sjc.ox.ac.uk](mailto:sophie.parkinson@sjc.ox.ac.uk).



# Ways to Give

St John's welcomes all philanthropic support, and donations of any size make a difference. There are many ways you can join us in supporting St John's through gifts of time, expertise, and financial contributions. Scan the QR code on the opposite page or visit [sjc.ox.ac.uk/alumni/contribute/](https://sjc.ox.ac.uk/alumni/contribute/) to learn more.

## Regular Giving

Regular gifts of all sizes provide dependable income and allow the College to plan for the future.

## Single Gifts

One-off donations are very welcome and can be made online, via bank transfer or cheque.

## Overseas Giving

There are tax-efficient ways of giving for donors from USA, Canada, Hong Kong, Switzerland, Belgium, Germany, Greece, Hungary, Poland and Spain. Please visit [sjc.ox.ac.uk/alumni/contribute/how-give/](https://sjc.ox.ac.uk/alumni/contribute/how-give/) or contact the Development and Alumni Relations Office to learn more.

## Gift Aid

UK tax-paying donors may be eligible to include Gift Aid on their charitable contributions. Gift Aid enables us to claim an additional 25% from the Government on your gift at no extra cost to you. Higher rate tax payers can claim tax relief on their donation when completing their tax return.

## Give Shares

UK taxpayers who make a gift of shares pay no capital gains tax on the sale of those shares, and can use the value of their donation to reduce their taxable income. Americans for Oxford is also able to accept gifts of shares.

## Time and Expertise

We are always delighted to welcome members of our community to share their expertise with our students. Let us know if you'd like to get involved.

## Alumni Benefits

To see the events calendar and your alumni benefits, visit [sjc.ox.ac.uk/alumni/alumni-benefits/](https://sjc.ox.ac.uk/alumni/alumni-benefits/) to learn more.





The Development and Alumni Relations team

**We would love to hear from you if you'd like to join us in supporting St John's.**

Development and Alumni Relations Office  
St John's College  
St Giles  
Oxford, OX1 3JP

+44 (0) 1865 610 885  
alumni@sjc.ox.ac.uk

St John's College is a Registered Charity  
(no 1139733).



Scan the QR code to find out more about why we need your support.



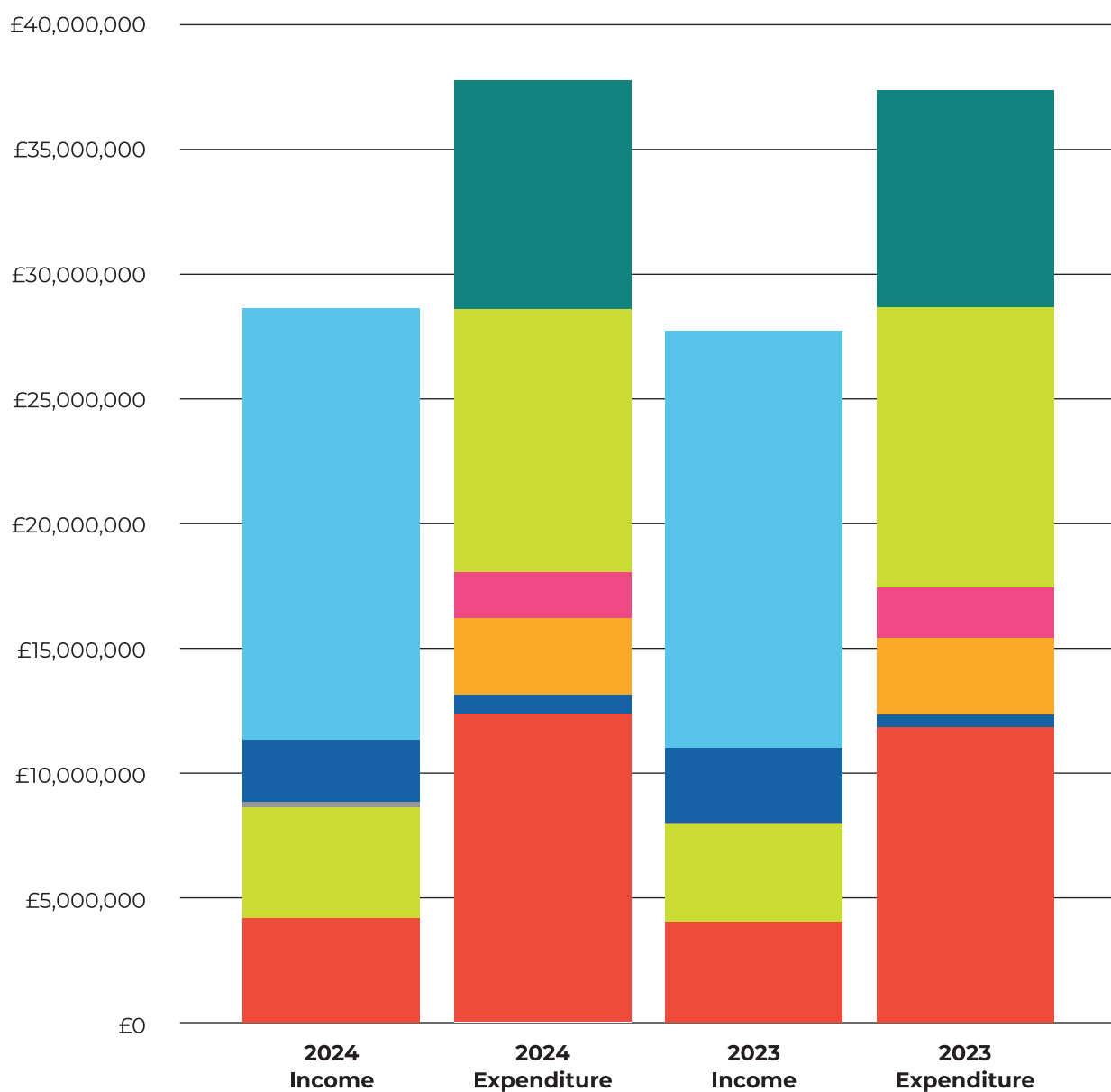


# Financial Summary Report

## Sources of and Use of Funds for the year 2023–2024

The College presents its results for the year ended 31 July 2024 in accordance with the Statement of Recommended Practice on Accounting and Reporting by Charities issued by the Charity Commission in 2014. A summary of the College's consolidated financial activities is as follows:

	2024 £'000	2023 Restated £'000
<b>Incoming College Resources</b>		
Resources from charitable activities	8,604	7,973
Unrestricted revenue legacies and donations	146	1,312
Restricted revenue legacies and donations	1,167	740
Trading income and other generation of funds	200	23
	10,117	10,048
<b>Funding from the College Endowment</b>		
Investment income and interest	17,334	16,751
Capital gains	389	11,500
Capital gains used to fund restricted and designated activity	192	486
	17,915	28,737
<b>Total incoming resource</b>	<b>28,032</b>	<b>38,785</b>
<b>College Expenditure</b>		
Teaching and research	31,175	34,771
Public worship	111	102
Fundraising	926	669
Trading and sundry expenditure	233	250
<b>Total Expenditure</b>	<b>32,445</b>	<b>35,792</b>
<b>Net College Revenue</b>	<b>(4,413)</b>	<b>2,993</b>
	2024 £'000	2023 Restated £'000
<b>Summary of Endowment Movements</b>		
Opening Endowments	713,764	694,828
Investment gains	61,081	50,450
New Endowments	(140)	918
Endowment costs	(9,902)	(14,446)
Gains used to fund operating activity	(389)	(11,500)
Gains on restricted and designated endowments used to fund operating activity	(192)	(486)
Gains used to fund fixed assets	(3,900)	(6,000)
<b>Closing Endowments</b>	<b>760,322</b>	<b>713,764</b>
<b>Total net return</b>	<b>68,513</b>	<b>52,755</b>
as % opening endowment	9.6%	7.6%
<b>Returns as % opening endowment used to fund:</b>		
Revenue activity	2.5%	4.1%
Revenue activity and fixed asset changes	3.1%	5.0%



Expendable endowment funds have been restated at 31 July 2022 and 2023 as a result of a change in accounting policy to reflect donations under the Corporate Gift Aid Scheme being credited to the endowment from endowed subsidiaries, and draw down of funds to support operational activity and fixed asset investment.

#### Income

- Funding from endowments
- Revenue donations
- Commercial
- Residential
- Academic

#### Expenditure

- College works
- Domestic
- Administration
- Interest
- Alumni and Development
- Academic



# Roll of Benefactors

# Major Benefactors

This section contains the names of major benefactors, current as of **31 December 2024**.

- △ Member of the Chancellor's Court of Benefactors (donors who have given over £5 million to the University)
- Member of the Vice-Chancellor's Guild (donors who have given over £1 million to the University)
- ◇ Member of the Vice-Chancellor's Circle (donors who have given over £250,000 to the University)
- ∞ Member of the President's Court (donors who have given over £1 million to the College)
- × Member of the President's Circle (donors who have given over £500,000 to the College)

**Names in bold indicate members of the 1555 Society (Regular gift or pledge of £1,555+ per annum)**

## Sir Thomas and Lady White Benefactors (£1,000,000+)

Anonymous (Friend) (1957) ∞  
 Anonymous (Friend) ∞  
 Nicholas Bratt (1967) □ ∞  
 The Late Professor Ioan James Hon Fellow and  
 The Late Dr Rosemary James ∞  
**Angus McLeod (1982)** □ ∞  
 Graham Sharp (1979) △ ∞  
 Daniel Slifkin (1984) □ ∞  
**Bernard Taylor CVO CBE DCL DL**  
**Hon Fellow (1975)** △ ∞  
 The Thompson Family Charitable Trust ∞

## Laud Benefactors (£750,000+)

Anonymous (1994) ×  
 Drue Heinz Trust ×

## Rawlinson Benefactors (£500,000+)

Edward Hocknell (1980) ◇ ×  
 The Late Roger (1958) and Susan Short ◇ ×

## Holmes Benefactors (£250,000+)

John Appleby (1962) ◇  
 Mark Bedingham (1974)

**Dr Yungtai A. Hsu (1971)** ◇

Nick Hunsworth (1976)

**Dr Eugene Lambert (1984) and Jana Lambert**

**Matthew and Frances Lindsey-Clark (1981)** ◇

Michael Pragnell CBE (1965)

Peter Thompson (1976) ◇

## Fereday Benefactors (£100,000+)

Anonymous (Friend)

Anonymous (Friend)

Anonymous (2000)

Anonymous (2007) in honour of

Professor Walter Mattli

**Stephen D Barber (1974)**

Dr James Buckee and Susan Buckee (Friend) ◇

**Professor Wendy Erber (1982) and**

**Professor Gary Hoffman (Friend)**

Global Talent Fund

The Late Professor Elizabeth Fallaize (1990) and

Professor Alan Grafen FRS (Friend)

Dr Hugo Madden (1967)

**Michael McDonough (1994)**

Dr Geoffrey Penzer (1962)

**David Ryan (1978)**

Gavin Sanderson (1976)

Dr Simon Tong (1994)



## Casberd Benefactors (£50,000+)

---

Anonymous (1954)  
Michael Barclay (1951)  
Roger Barnes (1957)  
Professor Dorothy Bishop Hon Fellow (1970)  
Geoffrey de Jager and Caroline de Jager (Friend) △  
David Fischel (1976)  
Angela Y Fu (Friend)  
**Graham Heald (1971)**  
Brian Hill (1950)  
Martin Jones (1987)  
Robert Kipling (1974)  
Dr James Lin (1991) and Nisa Lin (Friend)  
**Neil Matheson (1976)**  
**Dr Nigel Meir (1975)**  
Andrew Sillitoe (1990) and Joy Tadaki (Friend)  
**Dr Rashmi Tank (1988)**  
Richard Wake (1966)

## North Benefactors (£25,000+)

---

Anonymous (1957)  
**Anonymous (1963)**  
Anonymous (Friend)  
Dr Paula Aamli (1992)  
Henry Amar (1957)  
Christopher Barfoot (1952)  
Alexander Bashforth and Dr Pauline Bashforth (1988)  
Richard Burns (1979)  
Michael Collett KC (1989)  
**Thomas Ewing and Claire Ewing (1995)**  
Michael Fitzpatrick (1975)  
Charles Fryer (1958)  
**Robert D Garvin (1972)**  
**John Graham (1970)**  
**Professor Emeritus Peter Griffiths (1961)**  
Sir Stuart Hampson (1966)  
Alastair Hunter (1975)  
David Hutchinson (1980) and  
    Melanie Hutchinson (Friend)  
Peter Jarvis (1990)  
Simon Jay (1978)  
Nicholas Jones (1981)  
Piers Kenyon (1986)  
Bjorn–Peter Killmer (1991)  
**Professor Helen Lambert (1979)**  
Dr Alastair Lawson (Friend)  
Peter Loose (1953)  
Carl Michel (1981)

David O’Connell and Janet O’Connell (1982)  
Toby Owens (1989)  
Timothy Polglase (1980)  
The Late A & J Reid (1963)  
**Dr John Richards (1975)**  
Graham Robinson (1992) and  
    Dr Esther Robinson (1994)  
William A Scott (1975)  
The Rickety Charitable Trust  
**Dr Kevin Singleton (1975)**  
Howard Smith (1986)  
Solplanet  
**Dr David Standring (1970)**  
Robert Tann (1976)  
Corrinne Teo (1994)  
Dr David Thomas (1970)  
Roger Thomas KC (1974)  
John Waters (1984)  
Dr Trudy Watt (Friend) ◇  
Mark White (1973)  
**Dr Jonathan Wittmann (1970)**  
Steven Woolley (1975)

## Juxon Benefactors (£10,000+)

---

Anonymous  
Anonymous (1957)  
Anonymous (1959)  
Anonymous (1982)  
**Jonny Allison (1993)**  
Rupert Atkin (1977)  
Kenneth Bailey (1981)  
Julian Bennet (2001)  
**Dr Desmond Bermingham (1982)**  
Garry Borland (1994)  
Dr Ian Bostridge CBE Hon Fellow (1983)  
**Dr Anthony Boyce Hon Fellow (1957)**  
Dr Peter Braam (Friend)  
Dr Alexander Bridges (1968)  
Sir Nigel Carrington Hon Fellow (1975)  
**Dr Clifton R. Cleaveland, MACP (1958)**  
Philip Collins CBE (1973)  
The Late David Cullingham (1954)  
John Davidson (1978)  
Peter Davies (1967)  
Jonathan Davies (1965)  
Geoffrey Davies (1973)  
Sarah Deaves (1980)  
**Jim Dempsey (1974)**  
Dr Jonathan Duke–Evans (1974)

John Eckersley (1949)  
 Simon Egan (1971)  
 David Elmer (1968)  
**Professor Robin Fabel (1955)**  
**Professor Stephen Ferruolo (1971)**  
 Denis Finning (1958)  
 Nigel Fisher (1973)  
 Tony Foster (1964)  
 Keith Gerrish (1957)  
 Dr Ron Ghosh (1963)  
**Dr David Giachardi, FRSC (1967)**  
 Dr Francis Goodall (1951)  
**Stephen Green (1985)**  
**Dr Daniel J Guhr (1993)**  
**Bill Hanlon (1975)**  
**Ian Hargrave (1978)**  
 Dr Joseph M Hassett (Friend)  
 James Herndon (1976)  
 Dr Andrew Hodgson (1976)  
 Michael Hodgson (1986)  
**The Late Dr Peter Howard (1953)**  
**Ian Ingram (1962)**  
 Peter Jones (1963)  
 Allan Kaufman (1983)  
 Charles Kirwan-Taylor (1976)  
 Paul Boon Hui Khoo (1973)  
 John and Penelope Lebus Trust  
 Cressida Legge CBE (1987)  
 The Hon Keith Long (1976)  
 William Mackesy (1978)  
 Nicol McGregor (1963)  
 Rev Peter Moth (1957)  
**Richard Moyse (1962)**  
 Sandy Muirhead (1972)  
 Jonathan Nash KC (1981)  
 The Late Robert Needham (1952)

Will Pack (1990)  
**Edwin Palmer (1956)**  
 Michael Partridge (1951)  
 His Honour Judge Andrew Patience KC (1960)  
**Dr Anthony Pawley (1962)**  
 Bleddyn Phillips (1975)  
 Professor Robert Picken (1956)  
 Michael Pye (1964)  
 The Rt Hon Sir Stephen Richards Hon Fellow (1968)  
 Alastair Robinson (2000) and Rachel Robinson (2002)  
 Jonathan and Katie Ross (1991)  
 Sir Michael Scholar KCB Hon Fellow and  
 Lady Scholar (Friend)  
 Michael Servent (1989)  
 Pratik Shah (1992)  
 Robert Shaw (1974)  
**Ed Simnett (1985)**  
**Dr Peter Smail (1962)**  
 Hector Smith (1971)  
**Professor Maggie Snowling**  
 Dr Gill Sutherland in memory of  
 Alister Sutherland (1953)  
 Rupert Swyer (1965)  
**Dr Michael Tappin KC (1982)**  
 HH Robert Taylor (1957)  
 Professor Gwynne Thomas MRCP FRACP  
 FRCP OAM (1973)  
 Ian Topping (1978)  
 Dennis Usher (1951)  
 Professor Gerard van Gelder (Friend)  
 Dr Jay Watson (1984)  
 Peter Whittaker (1959)  
 Matthew Whittell (1983)  
 John Wilshaw (1956)  
 Peter Wilson (1985)  
**Geoffrey Ziman (1952)**





# Donations 2023–2024

This section contains the name of all donors who have given between **1 August 2023** and **31 July 2024**.

**Names in bold indicate members of the 1555 Society (Active recurring gifts or pledge of £1,555 per annum).**

## 1941

The Late Ian Ferguson

## 1942

The Late John Rednall

## 1948

Anonymous  
The Revd Frank Wells

## 1949

Dr Robyn Cain  
The Late Geoffrey Peck  
J. H. Thompson

## 1950

Professor Paul D.A. Harvey  
The Late Michael Moriarty  
and Rachel Moriarty  
Jim Quin

## 1951

Dennis Usher

## 1952

William Clarence  
**Geoffrey Ziman**

## 1953

Anonymous  
Michael Harris  
**The Late Dr Peter Howard**

## 1954

Anonymous  
Professor John Carey FBA  
Hon Fellow  
Ernest Chapman  
Harold Steer  
The Revd James Whysall

## 1955

Michael Baxendine  
Michael Cross  
Michael Goldsmid  
Richard Gowing  
Charles Salisbury

## 1956

Christopher Barclay  
Dr Keith Corless  
Peter Hayes–Davies  
**Edwin Palmer**  
Professor Robert Picken  
Peter Scott  
John Wilshaw

## 1957

Anonymous (3)  
Colin Bagnall  
**Dr Anthony Boyce**  
Hon Fellow  
Eric W. Coates

Robin Guenier  
The Venerable Brian  
Halfpenny  
Dr Raymond Harley  
Don Herbison–Evans  
Alexander Leckie  
Rev Peter Moth  
Martin Shelton  
Alan Spooner  
HH Robert Taylor  
Colin Wiseman

## 1958

Anonymous  
David Bastow  
Dr Rodney Bessent  
**Dr Clifton R. Cleaveland,**  
**MACP**  
Robert Crawley  
Denis Finning  
Charles Fryer  
David Harwood  
Mr C Horsford  
Graham Laurie

Michael Mann  
Alan Matthews  
Stephen Orr

## 1959

Peter Allan  
David Brierley  
Charles Dixon  
Peter Goodchild  
Professor John Helliwell,  
FRSC  
Christopher Kearton  
Robert Lyons  
The Late Peter McManus  
The Oxlade Family in  
memory of Dr Robert  
A. Oxlade (1959)  
Chris Parker  
John Ingham Smith  
Peter Whittaker

## 1960

His Honour Richard Behar  
The Rt Revd Graham Dow  
Roger Hawkins  
Stephen Higginson  
His Honour Judge Andrew  
Patience KC  
Rob Thirlby  
Dr Robert Tomkinson

## 1961

Anthony Addis  
Clive Bransom  
Professor Robert Cameron  
**Professor Emeritus Peter Griffiths**  
Ian House  
Anthony Hyder  
Dr John Lingard  
John Lloyd  
Richard Pettit  
Tim Price  
Dr Richard Sawyer  
Nevill Smith–Spark  
The Late Dr Barry Thomas  
Dr Ian Treharne  
Nigel Underwood  
Roderick Woods

## 1962

Anonymous  
Dr Michael Anson  
John Appleby  
James Berry  
David Bodger  
Robert Chase  
Professor Paul Fletcher

Richard Harper  
Grahame Higginson  
**Ian Ingram**  
Michael Lowe  
**Richard Moyses**  
**Dr Anthony Pawley**  
Dr Geoffrey Penzer  
David Phillips  
Michael Ross  
**Dr Peter Smail**  
Robert Wilson

## 1963

Anonymous  
**Anonymous**  
Ralph Cake  
The Revd Barry Entwisle  
Dr Ron Ghosh  
R. M. Hobby  
George Hodgkinson  
Robert Mackenzie  
Nicol McGregor  
Michael Nield  
The Late A & J Reid  
Peter Robinson  
Damien Tunnacliffe

## 1964

Dr John Brocklehurst  
Dr Alan Butt Philip  
Courtenay Ellis  
Tony Foster  
The Revd Dr Alan Harding  
Stephen Lloyd  
Michael Pye  
Martyn Robinson  
David Royle  
John Schofield  
Peter Slater  
Tony Smith  
Norman Smith  
Peter Stalker  
Kelvin Walton  
Nick White

## 1965

Anonymous  
Ian Alexander–Sinclair  
Dan Bernard  
Michael Bousfield  
Jonathan Davies  
Dr Peter Humphrey  
Dr David Hunt  
Marek Kwiatkowski  
Michael Pragnell CBE  
Dr Andrew Salmon  
Dr Andrew Spray  
Anthony Whitestone  
Dr Christopher Wright

## 1966

Peter Brown  
Sir William Callaghan  
Phillip Drummond  
Sir Stuart Hampson  
Patrick Longhurst CFP FCIA  
The Revd Iain Macdonald  
Sir David Pepper  
Rev G.S. Richardson  
Professor Clive Taylor  
Richard Wake  
Dr David Webster

## 1967

Dr M J Atkinson  
Dr Nigel Buttery  
Ted Button  
Peter Davies  
Dr Michael Eggar  
Richard Hoare  
Dr Michael Langdon  
Andrew Lynn  
Dr Hugo Madden  
Dr John Patchell  
Christopher Ward

## 1968

John Allan  
Kevin Alton Honeywell  
Graham H Ashurst  
Dr Alexander Bridges  
Michael Cayley  
Paul Diggie  
David Elmer  
P.H. Gamlen  
David Howard  
Adrian Mitchell  
Edward Peacock  
Charles Price  
Dr Thomas Reinecke  
The Rt Hon Sir Stephen  
Richards Hon Fellow  
Tim Roberts  
Anthony Robin  
Peter Robinson  
Dr Andrew Russakoff  
Christopher Sawyers  
Michael Thomas  
Crispian Villeneuve  
Baron Alexander von  
Ungern–Sternberg  
Simon Watts

## 1969

David Antcliffe  
Tyler and Margot Baker  
Geoffrey Bourne  
Philip Butcher

The Late Andrew Campbell  
Canon Jeremy Cresswell  
Peter Evans  
The Late Neil Goldman  
Derek Hart  
Martin Haworth  
Charles Mitchell  
Dr Stephen Postle  
Hugh Roberts  
Dr David Treacher  
Barry Wild

## 1970

Anonymous (2)  
Dr Andy Boyd  
Professor Sir John  
Cunningham  
Timothy Day  
Dr Robert Dingley  
Charles Dodd  
Nicholas Downes  
**John Graham**  
Roderick Halls  
Dr Michael Kerry  
Professor Paul Ladenson  
The Rt Revd Jonathan  
Meyrick  
Dr Peter Purton, FSA  
The Rev Melvin Schlachter  
John Schultz CBE  
**Dr David Standing**  
Andrew Taylor  
**Dr Jonathan Wittmann**

## 1971

Anonymous  
Gareth Allinson  
The Very Reverend Peter  
Atkinson  
Dr Mike Bissett  
Dr Pat Call  
Dr George Dempsey  
Simon Egan  
**Professor Stephen Ferruolo**  
Robert Galeta  
**Dr David Giachardi, FRSC**  
Jonathan Hancock  
**Graham Heald**  
Richard Horrocks  
Dr Jonathan Howell, MFPH  
**Dr Yungtai A. Hsu**  
Nigel Inkster CMG  
Dr John Jolleys  
Dr Maurice Leslie  
Alan Sandall  
David Scivier  
Michael Staples  
Dr Trudy Watt  
Jeremy White



## 1972

Anonymous  
**Robert D Garvin**  
 Dr Daryl Goodwin  
 Nigel Hughes  
 The Revd Prebendary  
 Nicholas Lowton  
 Dr John Mathias  
 Mark Owen  
 Dr Nicholas Robinson  
**Jonathan Toll**

## 1973

Richard Axford  
 Graham Belcher  
 Dr Thom Braun  
 Conrad Caspari  
 John Coull  
 Richard Dell  
 Graham Downing  
 Nigel Fisher  
 John and Margaret Hauge  
 Peter Johnson  
 James King-Smith  
 Andrew Lane  
 Dr Eric Marshall  
 Dr Peter Moore  
 Professor Barnaby Reeves  
 Dan Reynell  
 William Ruff  
 Roger Woods  
 Dr Damian Wren

## 1974

Dr Andrew Allen  
**Stephen D Barber**  
 Mark Bedingham  
 Edward Bickham  
 Donald Castle  
**Jim Dempsey**  
 The Revd Jonathan  
 Edwards  
 Professor Christopher  
 Fitter  
 Professor Helen Fulton  
 Dr Timothy Goldsack  
 Dr Nicholas Hyde  
 Professor Lawrence  
 Oppenheimer  
 The Late Dr Michael Prior  
 Robert Shaw  
 Duncan Straughen  
 Roger Thomas KC  
 Roger Titford  
 Nicholas Walden  
 Nick Walsh

## 1975

Anonymous  
 Andrew Armitage  
 Dr Christopher Burton  
 Dr Harold Carter  
 Christopher Chambers  
 John Anthony Coleman  
 David Dunn  
 Barry Elkington

**Bill Hanlon**  
 Martin Homewood  
 Alastair Hunter  
 The Rt Hon Sir Keith  
 Lindblom  
**Dr Nigel Meir**  
 Professor Andrew Morrall  
**Dr John Richards**  
 William A Scott  
**Dr Kevin Singleton**  
**Bernard Taylor CVO CBE**  
**DCL DL Hon Fellow**  
 David Turnbull  
 Michael Waldman

## 1976

Anonymous  
 Peter Brodie  
 Peter Brown  
 Paul Buckley  
 The Revd Professor Euan  
 Cameron  
 Colin T. Clarkson  
 Dr Paul Fage  
 Jonathan Fletcher  
 Clive Gerrard  
 Dr Timothy Goode  
 Richard Groves  
 The Rt Hon Lord Hamblen  
 of Kersey Hon Fellow  
**Lakhbir Hayre**  
 James Herndon  
 Dr Andrew Hodgson  
 Nick Hunsworth

Charles Kirwan-Taylor  
**Neil Matheson**  
 Eamonn Matthews  
 Dr Luke Newman  
 James Perkins  
 Mark H Robson  
 Gavin Sanderson  
 Michael Shallcross  
 Peter Thompson  
 Dr Martin Wood

## 1977

David Adkins  
 Paul Clarke  
 Keith Douglas  
 Steven Fox  
 Geoff Hine  
 Ian Hornby  
 Brent Isaacs  
 Dr James Keeler  
 Nicholas Laskaris  
 Dr Daniel Lips  
 J. J. Masri  
 Andrew Nelson  
 Gavin Potter  
 Dr Christopher Roberts  
 Barry Sankey  
 Dr Hugh Series  
 Fred Squire  
 Boyd Steemson  
 David Thomas  
 Sir Mark Warby  
 Matthew Wilson



## 1978

Jonathan Alexander  
Martin Bluemel  
Mark Everett  
Guy Grundy MRICS

### Ian Hargrave

Professor Andrew Harrison  
OBE FRS Hon Fellow  
Patrick Ingram  
Keith Jewitt  
William Mackesy  
Paul Maddox  
Dr Peter McDonald  
Brian Porritt  
Anthony Pralle  
Douglas Pritchard  
Dr Anthony Ringrose–Voase

### David Ryan

Iain Sach  
Robin Schneider  
Rupert Steele OBE  
Richard Sutton–Mattocks  
Ian Watson

## 1979

Anonymous (2)  
Sarah Beazley  
The Revd Nigel Bourne  
Dr Pritpal Buttar  
Michael Coffey  
Tim Daw  
Dr Philip Gunning  
Anthony Kendall  
Matthew Kirk

### Professor Helen Lambert

Julia Lim  
Howard Perkins  
David Thomas  
Anne–Marie Williams

## 1980

Johnny Aisher  
Peter Allwright  
Cheryl Burgess  
Polly Caffrey  
Anonymous  
Sarah Deaves  
F. Dove  
Dr Val Hennelly  
Thomas Hill  
Andrew Hussellbee  
David Hutchinson and  
Melanie Hutchinson  
The Late Dr Andrew  
McDonald  
Ian Mumby  
Professor Finbar  
O'Callaghan



Dr Frances O'Connor  
Michael Page  
Dr Isobel Pinder  
Timothy Polglase  
Professor Athan Shaka  
**Dr Hugo Slim**  
Matthew Spencer  
Nick Williams  
Hugh Woolhouse

## 1981

Christopher Adams  
Jill Aisher  
Kenneth Bailey  
Laurence Brown  
Dr Piers Clifford  
Brendan Cook  
Andrew Crawford  
Beth Foster  
Martin Gillespie  
Professor Kate Ince  
Nicholas Jones  
**Matthew and Frances  
Lindsey–Clark**  
Carl Michel  
The Revd Dr Ian Paul  
Dr Andre–Louis Rey  
Sheila and Tim Sawyer  
Dianah Shaw  
Shaun Spiers  
Peter Wienand

## 1982

Anonymous  
David Batchelor  
Lucy Baxandall  
**Dr Desmond Bermingham**  
Mary Clarkson  
**Professor Wendy Erber  
and Professor Gary  
Hoffman**  
Richard Fedrick  
Anthony Forshaw  
Craig Fulton  
Rupert Glasgow  
Rowan Howard  
Dr Catherine Lemon  
**Angus McLeod**  
Dr Douglas Mintz  
Anonymous  
**David O'Connell and  
Janet O'Connell**  
Professor Sir Stephen  
Powis MRCP  
Rachel Sever  
Stephen Sidebottom  
Dr Robert Simpson  
Barbara Slater CBE  
Hon Fellow  
**Dr Michael Tappin KC**  
Dr Gary Watson

## 1983

Anonymous  
Philippe Barbour

Tim Bennett  
Professor Alexander Bird  
Christopher Brunker  
Andrew Coats  
Ian Corfield  
Sheila Craske  
Brian Cregan  
Mark Evans  
Damian Gardner  
Professor Peter Goddard  
Martyn Holmes  
Jonathan Kewley  
Richard Klingler  
Matthew Whittell

## 1984

Anonymous (2)  
Professor Myles Allen CBE  
Hon Fellow  
Professor Richard Burgess,  
FRSC  
Ira Feinberg  
Elizabeth Gardiner  
Jonathan Hudston  
David James  
**Dr Eugene Lambert and  
Jana Lambert**  
John Lee  
Dr Sarah Marsden  
Toby Mason  
Anna McMahon  
Andrew Mitchell  
Matthew Rhodes  
Dr Andrew Ruffhead  
Jurgen Rupp  
James Ryan  
Daniel Slifkin

## 1985

Jeremy Amies  
Simon Artymiuk  
The Rt Revd Jonathan  
Baker  
Hugh and Caroline Boileau  
Dr Peter Braam  
Anne–Therese Carpenter  
and Douglas Carpenter  
Professor Francois du Bois  
Dr Karin Galil  
**Stephen Green**  
Jeanette Holland  
Nigel Hufton  
Anne–France Morand  
Dr Christopher Norris  
Mark Roper  
**Ed Simnett**  
Nigel Slater  
**Michael Spencer**  
Ian Stoodley  
Henrietta Wallace





## 1986

Anonymous (2)  
Clare Campbell-Smith  
Sohrab Daneshkhu  
James Eadie  
Paul Franklin  
James Fraser  
Dr Rosalind Glasspool  
Professor Hans-Johann  
Glock  
Ganesh Gudka  
Ali and Nick Hampton  
Jeremy Hoad  
Dr Louise Hunter  
Maurice Jones  
Chris Kennedy  
Piers Kenyon  
Alastair Levy  
Florence Maskell  
Paul Sherliker  
Dr Edmund Stephens  
Sarah Thomas  
Lucy Vaughan

## 1987

Martyn Atkins  
Graham Bruford  
Jacci Bulman (née  
Garside)  
Dr Bill Calthorpe  
Dr Lisa Cowey  
Steve Goddard

Dr Michael Hicks  
Dr Katie Jeffery, FRCP,  
FRCPath  
Martin Jones  
Dr James Lide  
Ginny McCloy  
Natalie Morley  
Daniel Norcross  
Rosemary Parkinson  
Alice Pedder  
Nicki Robinson  
Andrew Twigger  
Patrick and Charlotte  
Woodford

## 1988

Ashish Bhadra  
Jason Davis  
John Hayns  
Dr Neil Hindle  
Dr Geoffrey Hudson  
Ryan Jarvis  
Dr Ian Lilley  
Ed Loach  
Melissa Makwarimba  
Stuart Mercer  
Reverend Heidi Merrett  
Julian Milford KC  
**Christopher Norris and  
Helen Norris (née  
Stephenson)**  
Dr Tamsin O'Connell  
Edward Sharp

Dr Tish Sheridan  
Fiona Speirs  
Dr Ian Stares  
Dr Julian Sutton  
**Dr Rashmi Tank**  
Lauren Taylor

## 1989

Sarah Box  
Dr Jason Breed  
Dr James Calvert  
Isabella Clarke  
Michael Collett KC  
Richard Collins, FCA  
Desmond Duffy  
Professor Jonathan A  
Jones  
Louisa Mander  
Michael Servent  
Surinder Toor  
Victoria Western  
Antony Woodhouse

## 1990

Professor Matthew Angling  
Sarah Angling  
Dr Glenn Baggley  
Simon Banks  
David and Tamara  
Campbell  
Victoria Clark (née  
Butcher)

Bruce Gardiner  
Andrew Graham  
Victoria J. Robertson  
Anne Heaton-Ward  
Jonathan Inkson  
Peter Jarvis  
Michael Lamb  
Dr Erika Milburn  
Dr Charles Morgan  
Professor Marcus Munafò  
Alex and Melanie Peeke  
Andrew Sillitoe and  
Joy Tadaki  
Captain Greg Toyn

## 1991

Anonymous  
Rachel Walker  
Alex Bollen  
Dr Nicola de Savary  
Luke Jacobs  
Bjorn-Peter Killmer  
Kilmeny MacBride  
Dr James Murray  
Darren Reeve  
Dr Kirsten Travers-Uyham  
and Mr John Uyham

## 1992

Anonymous (2)  
Peter Banks  
Aidan Corey  
Andrea Cornwell  
Jeremy Douglas  
Rosie Hemmings  
John Henderson  
David Irvine  
Dr Sam Morgan  
Dr Simon Morris  
Robert Palmer  
Richard Parry  
Dr Stuart Warwick

## 1993

**Jonny Allison**  
The Venerable Verena  
Breed and Dr Jason Breed  
Alexander Cameron  
Alison Collins  
Alexandra Davies  
Professor Stephen Fox  
**Hannah Gilbert**  
**Dr Daniel J Guhr**  
Peter Houlihan  
Dr Glenn Leighton  
Chivonne Preston  
**Adam Sandman**  
Dr Anja Schmidt-Ott  
Dr Emma Slaymaker

Paul Winchester  
Dr Karl Zepf

## 1994

Margaret Allen  
Daniel Annetts  
William Ashby and Karin Ashby  
Claire Brice  
Justin Coombs  
Dr David Crosby  
Scott Dickson  
Clive Gringras  
**Edward Haines**  
**Michael McDonough**  
Jenny Rimbault  
Dr Simon Tong

## 1995

Anonymous  
Christopher Bowles  
Guy Bradbury  
Joe Eagle  
**Thomas Ewing and Claire Ewing**  
Sarah Gauden  
Dr Thomas Jestadt  
Claire Kennedy  
Mrs Emma J. Krousti

Dr Quentin Mason  
Zoe McKinnon  
Turi Munthe, FRSA  
Dr Eoin O'Sullivan  
Dr Sven Peyer  
Anita Sharman  
Edward Smith  
Benjamin Wood

## 1996

Helen Ballard  
Neil Enright  
Dr Jutta Huesmann  
Dr Jiejun Li  
Zoe Lourie  
Andrew Miller  
Mr Samir Mody  
Dr Victoria Morgan  
**Nigel Walder**  
Peter Ward  
Amy Wan in memory of  
husband Thomas Wu  
(1996)

## 1997

Anonymous  
Andrew Allen  
Jennifer Back  
Dr Steffan Davies

Professor Linda Doerrer  
Professor Jacob Dunningham  
Cecilia Fellows  
Cleopatra Kostopoulou  
Matthew Morrison  
Nadia Motraghi  
Alison Nicholls  
Zoe Porter  
David Sheldon  
Charlotte Tillett  
The Revd Sven Waske  
Gillian Weale

## 1998

Quilla Constance aka  
Jennifer Allen  
Karen Ashtiani  
James Ballance and  
Rebecca Ballance  
Dr Ryan Baron  
Tim Bridle  
Olivia Hagger  
Dr Oliver Holt  
Alison Lakey  
Professor James–Mark Lazenby  
Dr Thomas Lockhart  
Dr Andrew Plumb  
Hilary Spencer  
Rachel Tsang  
Jack Waley–Cohen

## 1999

Dr Lucy Astle  
Aaron and Emily Bell  
Tate Greenhalgh  
Louise King  
Andrew Kirton–Vaughan  
Dr Steven Laurie  
Dr Gemma Lewis–Williams  
Rachel Malpass–Brown  
Thomas Morfett  
**Matthias Osthoff**  
Ewa Pilka  
Helen Sanders  
Tristan Walker–Buckton  
Dr Martin Ward

## 2000

Anonymous  
Antony Clegg  
Richard Edwards  
James Folan  
Dr Vincent Hamlyn  
Ryan Hayward  
Mark Higgins  
Sarah Innes

Matthew Jenkins  
Dr Camille Koppen  
Selena McGuinness  
Marcus Pollard  
Dr Alexander Rau  
Harriet Roberts (née Smith)  
Dr Thomas Rowlands–Rees  
Hina Sra  
Dr Katie Taylor  
Dr Bethan Tovey

## 2001

Emily Black  
James Cleaver  
Linsey Cole  
Dr Alex Feldman  
Stuart Glass  
Oliver Grieve  
Dr Henry Leventis  
Dr Sarah Myers  
William Naylor  
Professor Dwight Newman  
KC  
Alexandra Prior  
Sanjaya Ranasinghe  
Sarah Robin  
Stephen Robin  
Michael Sew  
Dr Ian Streeter  
Dr Joanne Taylor

## 2002

Simon Atrill  
Dr Alistair Bird  
Robert Cook  
Alexander Cooper  
Eleanor d'Arcy  
Dr Jamie Darling  
Stacy Davies  
Abigail Davis  
Natalie De–Heer (née Dyce)  
William East  
James Hall  
Andrew Henderson  
Dr Katherine Hyde  
James Littlewood  
Stephen Martin  
Dr Catriona McAllister  
Susannah Meeke  
Laura Poots  
Dr Louise Sherlock  
Kulveer Taggar  
Dr Christopher Turnbull  
Bethany Walker  
Jonathan Wiseman  
Dr Alexander Woods  
Dr Mantha Zarmakoupi





## 2003

Peter Clayburn  
Neil Davies  
Jonathan Day  
Natalya Dragicevic  
Andrew Freer  
Duncan Gould  
Alexander Halban  
Dr Leon Harrington  
Dr Mark Jenkins  
Mrs Claire Jones  
Calum Kennedy-  
McConnell  
Nathaniel Kent  
Dr Katherine LaFrance  
Christopher Lillywhite  
Hetal Makwana  
Natasha Mander-Wood  
Alison Moreton  
Yaa-Hemaa Obiri-Yeboah  
Genevieve Shaw  
Felicita Wallace  
Elizabeth Warren  
Timothy Williamson  
Dr Peter Wright

## 2004

Anonymous  
Philip Anastasi  
Dr Robert Avis  
Dr Lennart Brand  
Dr Paul Crewe  
Bethany Farrand  
Dr Sarah Farrell  
Dr Rebecca Harris  
Ellie Jestico  
Caroline Keen  
Dr James Ross  
Dr Hannah Pimperton

## 2005

William Breame  
Stacey Burns  
Sarah Davies  
Gemma Farnworth  
Kathleen Geoghegan  
Martin Henstridge  
Dr David Hewings  
Natalie Hockham  
Luci Ingram  
Rhys Jones  
Gareth Lott  
James Muscat  
Emily Palmer  
Dr Ben Pilgrim  
Dr Adam Povey  
Kim Sofroniou  
Yao Zhou



## 2006

Anonymous  
Anna Bates  
Helen Cullis  
Robert Drabble  
Cathy Han  
Gareth Jones  
Alan Kyffin  
Celine Levy  
Peter Lockwood  
Kieran Mahanty  
Nennia Orji  
James Osun-Sanmi  
Mary Penman  
Tom Perry  
Phoebe Sanders  
Martin Smith  
Charles Stewart

## 2007

Edward Barnes  
Lucy Bridge  
Jill Brumier  
Mike Bryant  
Dr Laura M. Castelli  
Alexander Chadwick  
Carmen Chan  
Elizabeth Copp  
Thomas Cullis  
Nassali Douglas  
Jeremy Evans  
Dr Richard Fawcett  
Amelia Field  
Jamie Findlay  
Matthew Green  
Sholeem Griffin  
Naoya Koda

Arpine Kozmanyany  
Rachel Loomes  
Henry Naish  
Nabeel Qureshi  
Gabrielle Reason  
Aled Richards-Jones  
Kate Rockliffe  
Dorota Sakwerda-Chrobak  
Ravin Thambapillai  
Dr Judah Weathers

## 2008

Anonymous  
Dr Jonathan Daly  
Dr Sarah Davidson  
Eugene Duff  
Tess Ellison  
Alexander Gozney  
Geoffrey Hall  
John Harfield  
Nicholas Higgins  
Hugo Holmes  
Gabriel Lenagh-Snow  
George Lewis  
Fleur Mason  
Jon Phillips  
Tabassum Rasheed  
Dr Emily Stevenson  
Marta Szczerba  
Anthony Thompson-Nutt  
Charlotte Roberts  
Sarah Turner  
Simon Wardle

## 2009

Helen Austin  
Jack Bradley-Seddon

Helen Brooks  
Jack Clift  
Jessica Cummings  
Duncan Edwards  
Hannah Evans  
Tarun Gupta  
Fakhri Karimli  
Tim Kiely  
Dr Eliz Kilich  
Siobhan Mires  
Dr Edward Peveler  
David Rainsley  
Laura Richards  
Tristan Rogers  
Sean Ruscitto  
Rhian Stansfield  
Adam Trepczynski  
Benjamin Waterhouse

## 2010

Anonymous (2)  
William Balcombe  
Jessica Edge  
Emily Fradd  
Dr Joseph Larvin  
Edward Love  
Dr Joseph Mason  
Sam Munteanu-Ward  
Michael Patefield  
Alexandar Peshev  
Will Todman  
Uchchukwu Ukachi  
David Wray

## 2011

Anonymous  
Franz Bauerlein  
Thomas Beauchamp  
Holly Ellis  
Dr Emily Hinson  
Dr Aleksandar Ivanov  
Jessica Lees  
Dr Yingqi Liu  
Hamaad Mustafa  
Giulia Roverato  
Jake Savile-Tucker  
Benjamin Scrace  
Jacob Swain  
Romilly Tahany

## 2012

Robyn Ashley  
Eleanor Bath  
Sean Cannon  
Benjamin Eisert  
Alexander Ekserdjian  
Alfred Fabian  
Cecilia Herbert  
Philip Lucas

Dr Olli Lupton  
Ruth Maclean-Jones  
Rustin Nourshargh  
Edward Rarity

## 2013

Charles Clegg  
Charles Goodman  
Symeon Hunt-Brady  
Harry Palmer  
Laura Pittman  
Victoria Skornia  
Colette Snape  
Christopher Williams  
Miss Yining Yang

## 2014

Anonymous  
Matthew Ford  
Alastair Graham  
Michal Kreft  
Cecilia Peker  
Daniel Sowood

## 2015

Timothy Foster  
Alistair Hankey

Chris Kruizinga  
Sam Morris  
Jan Schwarzfischer  
Philipp Thumfart

## 2016

Henry Hatwell  
Georgia Walker

## 2017

Tyler Pager

## Friends

Anonymous (3)  
Dr James Buckee (Merton)  
and Susan Buckee  
(LMH)  
Dorothee and Alexander  
Emmrich  
Dr Katharine Earnshaw  
Geoffrey de Jager and  
Caroline de Jager  
Tanya McDonagh  
Luther Pilkinton  
Jacob Ward (CC)  
Staples Wood

## College Staff

Professor Katherine  
Blundell OBE  
Denise Cripps  
Robert Crow  
Dr Georgy Kantor  
Professor Nikolaj Lübecker  
Professor Barry Murnane  
Professor Kate Nation  
**Professor Maggie  
Snowling**  
Professor Alastair I Wright

## Organisation

Anonymous  
Global Talent Fund  
John and Penelope Lebus  
Trust  
KKR  
Macquarie Asset  
Management  
R&HK Family Foundation  
Richard Brown Research  
Foundation  
Solplanet  
The Thompson Family  
Charitable Trust

## Gifts in Kind

Christopher Wayland  
(1997)  
Courtenay Ellis (1964)  
Dr Alex Bollen (1991)  
Dr Brian Tulloch BM BCH  
(Oxon) (1961)  
Dr Kate Molesworth (1984)  
Dr Richard Northing (1986)  
Emma McCormick-  
Goodhart (2008)  
Giulia Roverato (2011)  
Karin Stierlin (Friend)  
Marcus Lee (1995)  
Mark Bedingham (1974)  
Matthew Ford (2014)  
The Hon. Mr Justice  
Bright (1982)  
Nicholas Bratt (1967)  
Nick Hunsworth (1976)  
Professor George  
Constantinides (1967)  
Professor Paul Gompers  
(1987)  
Dr Rashmi Tank (1988)  
Stephen D Barber (1974)







# Thank you



**St John's College**  
Oxford

Development and Alumni Relations Office,  
St John's College,  
Oxford, OX1 3JP

+44(0)1865 610885  
alumni@sjc.ox.ac.uk  
www.sjc.ox.ac.uk

**Do we have your email address?**

Visit [sjc.ox.ac.uk](https://sjc.ox.ac.uk) and go to our 'Update your details' form to ensure that you are kept up to date with all things St John's.



**Scan the QR code  
to find out more  
about why we  
need your support**